

Product Information

Body: Forged Steel
Rating: 150# ANSI

This 150# raised-face flange can be used to hold up to four accessories. Any standard FDI accessory can be placed in a 1/4" port (C4). It is generally acceptable to thread brass accessories in the steel accessory flange. The accessory ports are welded half couplings. The 1/4", 1/2" and 3/4" porting option can be placed at any of four o'clock positions; 12:00, 3:00, 6:00 and 9:00. (At an additional price.) Use 1/2" or 3/4" UB valves for drain valves. Thermowells are generally 3/4".

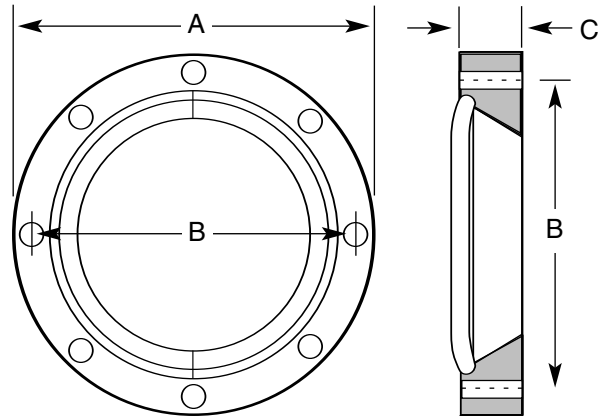
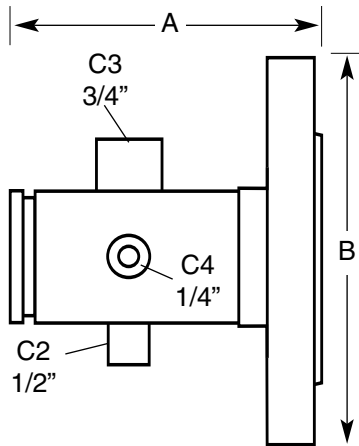
Dimensions not to be used for construction unless prints certified by factory.

Nominal Dimensions & Weights

Model	Size	A	B	C with 1/4" port	Weight
FA0200	2"	5.00	6.0	1.72	6.4
FA0250	2 1/2"	5.25	7.0	1.97	10.9
FA0300	3"	5.12	7.5	2.28	12.18
FA0400	4"	5.31	9.0	2.78	16.78
FA0500	5"	5.44	10.0	3.31	20.52
FA0600	6"	5.56	11.0	3.84	26.0
FA0800*	8"	5.75	13.5	4.84	40.5

Notes:

1. Clock position looking from rear.
 2. Typical model number for flange shown:
FA0300 — C3 at 12, C4 at 3, C2 at 6 are optional, C4 at 12 & 3 is standard.
- All weights and dimensions given are in pounds and inches and are subject to minor changes.
 Dimension (C) will vary depending on part size other than 1/4".



Product Information - Model FG

Body: Forged Steel
Rating: 150# ANSI

This 150# raised-face flange grooved end assembly can be used to hold up to four accessories. Any standard FDI accessory can be placed in a 1/4" port (C4). It is generally acceptable to thread brass accessories in the steel accessory flange. The 1/4" (C4), 1/2" (C2) and 3/4" (C3) are welded half couplings. These porting options can be placed at any of four o'clock positions; 12:00, 3:00, 6:00 and 9:00. (At an additional price.) Use 1/2" or 3/4" UB valves for drain valves. Thermowells are normally 3/4".

Dimensions not to be used for construction unless prints certified by factory.

Nominal Dimensions & Weights - Model FG

Model	Size	A	B	Weight
FG0200	2"	5.00	6.0	6.4
FG0250	2 1/2"	5.20	7.0	10.2
FG0300	3"	5.19	7.5	12.0
FG0400	4"	5.34	9.0	16.3
FG0500	5"	5.44	10.0	21.5
FG0600	6"	5.56	11.0	26.0
FG0800	8"	5.75	13.5	40.5

Notes

1. Clock position looking from rear.
2. Typical model number for flange shown:
FG0300 — C3 at 12, C4 at 3, C2 at 6
3. Ports Optional.

All weights and dimensions given are in pounds and inches and are subject to minor changes.

Product Information - Model GF

Body: Ductile Iron
Rating: 225 psi at 250° F
Seal: EPDM

The grooved flange adapter provides a direct transition from flanged components to grooved piping. Metal flange washer adapters are shipped with the unit and recommended for use with butterfly valves and serrated flange surfaces.

Dimensions not to be used for construction unless prints certified by factory.

Nominal Dimensions & Weights - Model GF

Model	Size	A	B	C	Weight
GF0200	2"	6.4	4.75	0.75	3.4
GF0250	2 1/2"	7.0	5.50	0.90	4.8
GF0300	3"	7.5	6.00	0.95	5.4
GF0400	4"	9.0	7.50	0.95	6.9
GF0500	5"	10.0	8.50	1.00	8.5
GF0600	6"	11.0	9.50	1.00	10.2
GF0800	8"	13.5	11.75	1.12	15.7
GF1000	10"	16.0	14.25	1.20	21.0
GF1200	12"	19.0	17.00	1.25	31.0

Notes

All weights and dimensions given are in pounds and inches and are subject to minor changes.